

# The Willow

Illustrative purposes only

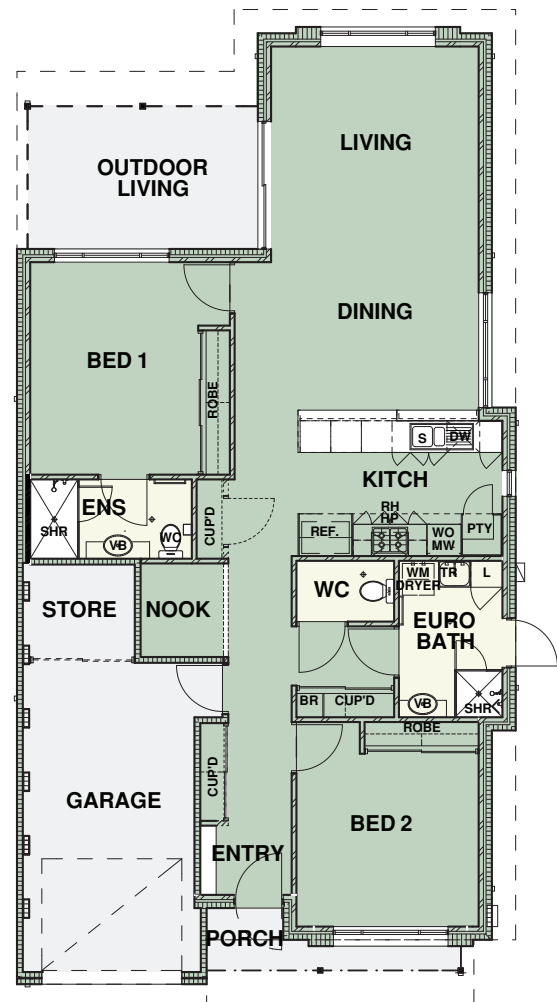


## THE WILLOW – HOME TYPE 7

Space and storage are in abundance at The Willow, a two bedroom, two bathroom home with plenty of charm. The expansive open plan living, dining and kitchen space opens up into the large outdoor living area, offering plenty of opportunities to entertain or simply relax and enjoy your new home.

### FEATURES

- 2 bedrooms with built in robes
- Ensuite bathroom
- Open plan living
- Kitchen overlooking living area
- 2nd water closet
- Outdoor paved living area
- Gas instantaneous hot water system
- Single garage (automatic door)
- Separate entry from garage
- Storage area in garage
- Solar roof panels



**FLOOR AREA: 115sqm GARAGE: 21sqm TOTAL AREA: 136sqm**

NOTE: Whilst every effort is made to supply these plans accurately, some variations may occur. These plans are subject to change without prior notification.

Freecall: 1800 778 828  
willowbrookvillage.com.au

