

The Pinot

Illustrative purposes only

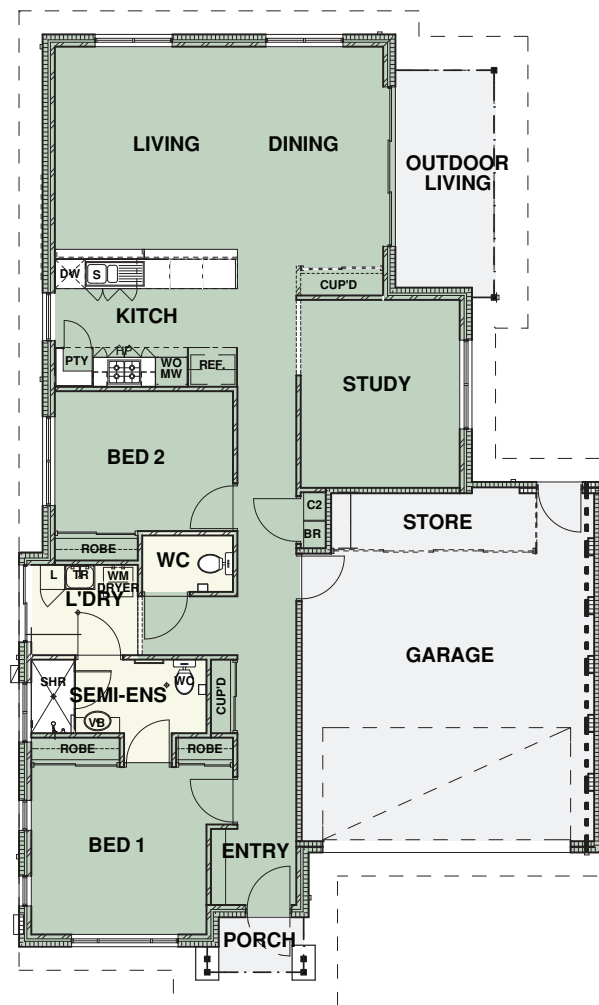


THE PINOT – HOME TYPE 5

The Pinot is a three bedroom, one bathroom home designed to reflect the relaxed lifestyle on offer at Willow Brook. The spacious open plan living area flows on to the outdoor area at the rear of the home, while the main bedroom at the front of the home offers plenty of room to relax.

FEATURES

- 3 bedrooms (2 with built in robes)
- Semi-ensuite bathroom
- Open plan living
- Kitchen overlooking living area
- 2nd water closet
- Outdoor paved living area
- Gas instantaneous hot water system
- Double garage (automatic door)
- Separate entry from garage
- Storage area in garage
- Solar roof panels



FLOOR AREA: 126sqm GARAGE: 37sqm TOTAL AREA: 163sqm

NOTE: Whilst every effort is made to supply these plans accurately, some variations may occur. These plans are subject to change without prior notification.

Freecall: 1800 778 828
willowbrookvillage.com.au

